

*Teaching Security Lesson 1: The Security Mindset*  
**Activity: Threat Modeling a House**

**Blue Team Model**

Here's the basic floor plan for your house. Isn't it nice?

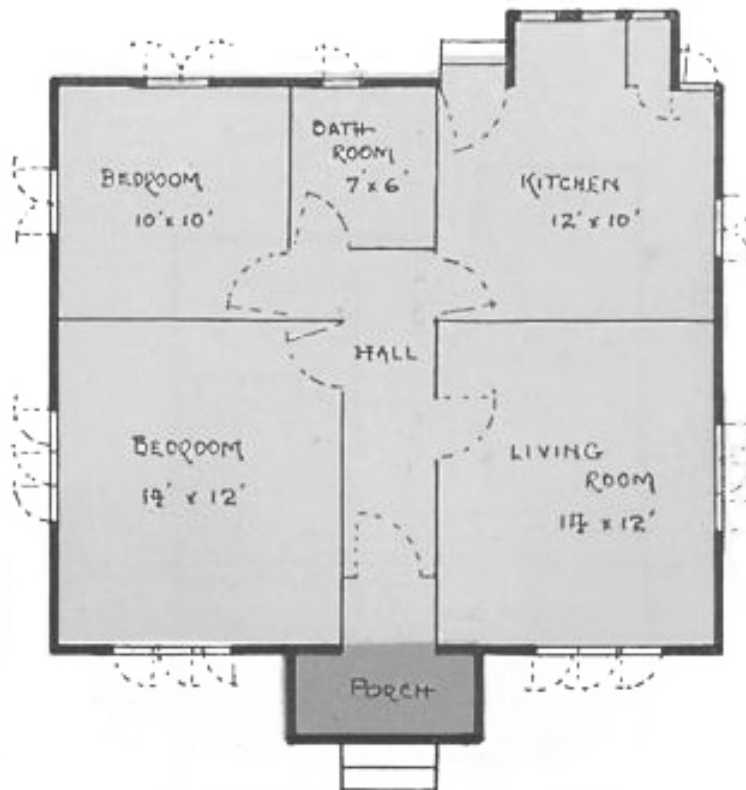


Image from *99 Everyday Homes for Queenslanders* (Brisbane: Home Building Publishing Co., 1939). Via Wikimedia Commons; public domain.

**Key:**



Window (double)



Door

*Provide labels here for any symbols you use!*

## For You to Add/Draw in on Your Floor Plan

- What things are inside the house?
- What's right outside or near the house?

## Your Defense Plan

The drawing on the previous page is the *model* of the thing (your house) that you want to defend!  
Now you can use that model to structure your thoughts about how you'd defend it.

What are some characteristics of the house that are relevant for defending it?

What (or who) is in your house that you want to protect? Where in the house are they?

What negative impacts do you want to prevent? (For you, your family, anyone else.)

How could someone get into the house and take or abuse the things you want to protect?

What's your defense strategy for preventing unwanted events from happening?

- **Add more details to the floor plan** to represent your defense strategy. (Remember to use the Key.)

# Red Team Model

--- Don't fill in the part below until your teacher tells you to! ---

If you wanted to steal or misuse the Blue Team's nice things, how would you get past the defenses they've drawn/described to get into their house? Write your ideas in the thought bubbles and represent them on the floor plan.

